



Relief Valves Technical Information

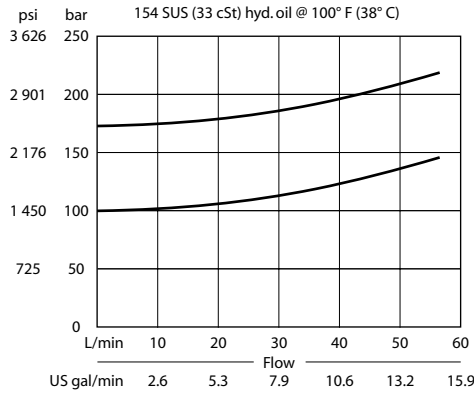
Direct Acting CP200-3

OPERATION

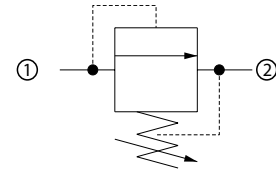
This is a direct-acting poppet type relief valve that relieves from 1 to 2.

SPECIFICATIONS

Theoretical performance



Schematic



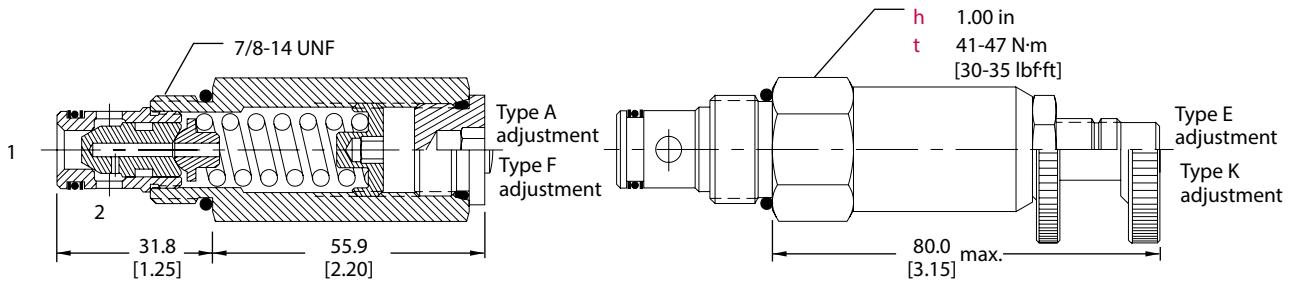
Specifications

Rated pressure	250 bar [3600 psi]
Rated flow	40 l/min [11 US gal/min]
Leakage	10 drops/min @ 80% of pressure setting
Weight	0.21 kg [0.47 lb]
Cavity	SDC10-2

DIMENSIONS

mm [in]

Cross-sectional view



ORDERING INFORMATION

CP200 - 3 - B - 6S - A - C - 150

- Seals: B = Buna-N, V = Viton
- Housing and ports: 0 = No Housing, DG3B = Al, 3/8 BSP, DG4B = Al, 1/2 BSP, 6S = Al, #6 SAE, 8S = Al, #8 SAE. Other housings available.
- Adjustment option: A = Internal, E = External, F = Tamper resistant, K = Knob
- Seal kit: 120073, 120074
- Housing P/N: No Housing, SDC10-2-DG-3B, SDC10-2-DG-4B
- Crack pressure: Code x 10 = psi. Example: 150 = 1500 psi
- Pressure range:

A	=	7-69	bar	[100-1000]
Standard		28		[400]
B	=	17-172	bar	[250-2500]
Standard		69		[1000]
C	=	41-248	bar	[600-3600]
Standard		103		[1500]