

# Solenoid Valves

## SV1-16-C

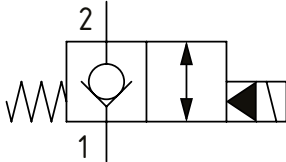
Solenoid Valve, 2-way, Poppet Type, Normally Closed, Pilot Operated with Reverse Free Flow

210 bar [3000 psi] • 132 l/min [35 US gpm]

### ■ OPERATION AND DESCRIPTION

This is a 2-way, 2-position, poppet type, pilot operated, normally closed solenoid valve. In its de-energized condition, flow passes from port 1 to 2 but is blocked in the opposite direction. When energized, flow passes from port 2 to 1 and from 1 to 2. Due to the low leakage provided by the poppet design, these valves can be used to hold loads in position or to interrupt a pressure line where flow normally passes in both directions.

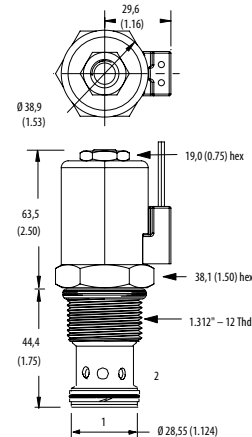
### ■ SCHEMATIC



### ■ DIMENSIONS

mm [in]

**Coil nut torque**  
5-8 Nm [4-6 ft. lbs]



**Installation torque**  
108-122 Nm [80-90 ft. lbs]

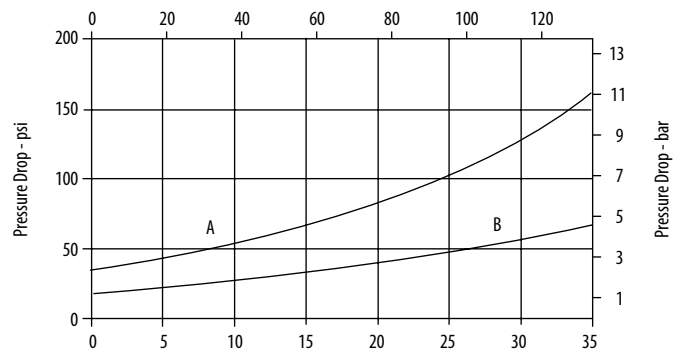
### ■ PERFORMANCE DATA

<b>Rated Pressure</b>	<b>210 bar [3000 psi]</b>
<b>Rated flow</b>	<b>132 l/min [35 US gpm]</b>
<b>Leakage</b>	5 drops/ min @ 210 bar [3000 psi]
<b>Coil Options</b>	J Series
<b>Weight</b>	1.15 kg [2.53 lb]
<b>Cavity</b>	SDC16-2

### ■ PERFORMANCE CURVES

#### Pressure Drop

Flow - L/min (21,8 cSt oil @ 49°C)



Flow - USgpm (105 SUS oil @ 120°F)

**A** - Port 2 to 1 energized • **B** - Port 1 to 2 de-energized

### ■ MODEL CODE

**SV1 - 16 - V - C - M - 6B - 12D - G**

#### Seal Option

Code	Seal kit
<b>Omit</b> - Buna - N	565810
<b>V</b> - Viton	02-889609

#### Manual Override Option

**Omit** - No manual override  
**M** - Pull and Twist  
**R** - Cable type

#### Housing

Code	Ports	Aluminum Standard duty	Aluminum Heavy duty
<b>0</b>	No Housing		
<b>6B</b>	3/4" BSP	02-175463	
<b>12T</b>	#12 SAE	566149	
<b>6G</b>	3/4" BSP		876718
<b>10H</b>	#10 SAE		876717
<b>12H</b>	#12 SAE		566113

\* Aluminum bodies are to be used for pressures less than 210 bar [3000 psi].  
\* Additional housings available

#### Connector Type

**Omit** - No coil  
**G** - ISO 4400 DIN 43650  
**Q** - Spade terminals  
**W** - Flying lead  
**N** - Deutsch (DC only)  
**Y** - Amp JR (DC only)  
**D** - Metripack 150 male (DC only)  
**J** - Metripack 280 male (DC only)

#### Coil Voltage

Code	Coil Voltage
<b>00</b>	No Coil, nut included (p/n 565558)
<b>12D</b>	12 VDC
<b>24D</b>	24 VDC
<b>115A</b>	115 VAC**
<b>230A</b>	230 VAC**
<b>12B</b>	2VDC/w diode*
<b>24B</b>	24 VDC/w diode*

\*Optional arc suppression diode  
\*\*Internally rectified  
\*\*\*Other voltage options available